

Impact Sockets



3/4" 6-Point

- A selection of Impact sockets from our Action range, available in 1/2", 3/4", 1" and 1 1/2" square drives with bolt sizes 8-85mm in both standard and long length. Adapters, extension bars and retaining pin & ring sets are also available.
- All Action Impact Sockets are manufactured in accordance with DIN3121 & DIN3129 and the European Regulation - Directive of Machinery 2006/42/EG & ISO11148-6. This states that only impact sockets are to be used in power tools.
- Many additional sizes are available to order from our full Action range. Please see the Action Socket Catalogue for further details.

Warning

Never use worn sockets. If sockets do not fit correctly this may cause a loss of power and wear on the anvil.



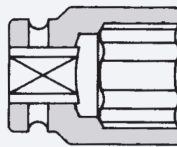
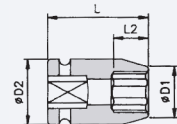
3/4"

6-Point Standard

Type A/F D1 D2 L L2 Socket Dimensional Drawing

Metrical

DO3034-0-013	13	25	44	50	9
DO3034-0-017	17	31	44	50	12
DO3034-0-018	18	32	44	50	13
DO3034-0-019	19	33	44	50	13
DO3034-0-021	21	36	44	50	15
DO3034-0-022	22	37	44	50	15
DO3034-0-024	24	40	44	50	16
DO3034-0-027	27	43	44	54	16
DO3034-0-030	30	47	44	54	21
DO3034-0-032	32	49	44	56	21
DO3034-0-033	33	51	44	56	22
DO3034-0-036	36	54	44	56	22
DO3034-0-038	38	57	44	58	24
DO3034-0-041	41	61	44	58	24
DO3034-0-046	46	67	44	63	27
DO3034-0-050	50	71	54	72	35

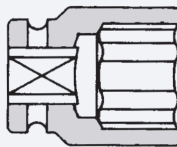
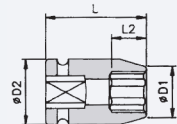


6-Point Long Length

Type A/F D1 D2 L L2 Socket Dimensional Drawing

Metrical

DO3034-1-013	13	25	44	95	133
DO3034-1-017	17	31	44	95	17
DO3034-1-018	18	32	44	95	18
DO3034-1-019	19	33	44	95	19
DO3034-1-021	21	36	44	95	21
DO3034-1-022	22	37	44	95	22
DO3034-1-024	24	40	44	95	24
DO3034-1-027	27	43	44	95	27
DO3034-1-030	30	47	44	95	30
DO3034-1-032	32	49	44	95	32
DO3034-1-033	33	51	44	95	33
DO3034-1-036	36	54	44	95	36
DO3034-1-038	38	57	44	95	38
DO3034-1-041	41	61	44	95	38
DO3034-1-046	46	67	44	95	38
DO3034-1-050	50	71	54	95	38



REPAIR & SERVICE DEPARTMENT

From the Yokota UK service centre at our Sheffield head office we are able to offer you full service, repair & preventative maintenance.

- FREE no obligation quotations
- 3 month comprehensive warranty on all work carried out
- Fully traceable repair history through our quality management systems
- Only OEM spare parts used
- Complete maintenance advice service