

# Impact Sockets



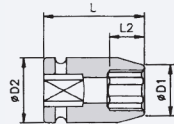
1/2"

## 6-Point Standard

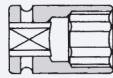
Type A/F D1 D2 L L2 Socket Dimensional Drawing

### Metrical

DO2012-0-008	8	14.5	24	38	9
DO2012-0-009	9	16	24	38	12
DO2012-0-010	10	17	24	38	12
DO2012-0-012	12	20	24	38	12
DO2012-0-013	13	21	24	38	12
DO2012-0-014	14	22	24	38	12
DO2012-0-015	15	24	24	38	12
DO2012-0-016	16	25	26	38	12
DO2012-0-017	17	26	26	38	13
DO2012-0-018	18	27.5	28	38	13
DO2012-0-019	19	29	30	38	13



DO2012-0-021 21 32 32 38 13



DO2012-0-022 22 32 32 38 13

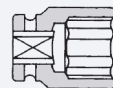
DO2012-0-024 24 35 36 45 20

DO2012-0-025 25 36 36 45 20

DO2012-0-027 27 39 38 50 22

DO2012-0-028 28 40 38 50 22

DO2012-0-030 30 42.5 38 50 22



## 1/2" 6-Point

- A selection of Impact sockets from our Action range, available in 1/2", 3/4", 1" and 1 1/2" square drives with bolt sizes 8-85mm in both standard and long length. Adapters, extension bars and retaining pin & ring sets are also available.
- All Action Impact Sockets are manufactured in accordance with DIN3121 & DIN3129 and the European Regulation - Directive of Machinery 2006/42/EG & ISO11148-6. This states that only impact sockets are to be used in power tools.
- Many additional sizes are available to order from our full Action range. Please see the Action Socket Catalogue for further details.

### Warning

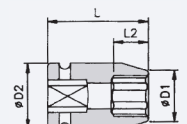
Never use worn sockets. If sockets do not fit correctly this may cause a loss of power and wear on the anvil.

## 6-Point Long Length

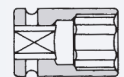
Type A/F D1 D2 L L2 Socket Dimensional Drawing

### Metrical

DO2012-1-008	8	14.5	24	78	13
DO2012-1-009	9	16	24	78	14
DO2012-1-010	10	17	24	78	14
DO2012-1-012	12	20	24	78	14
DO2012-1-013	13	21	24	78	14
DO2012-1-014	14	22	24	78	17
DO2012-1-015	15	24	24	78	17
DO2012-1-016	16	25	26	78	17
DO2012-1-017	17	26	26	78	17
DO2012-1-018	18	27.5	28	78	17
DO2012-1-019	19	29	30	78	19



DO2012-1-021 21 32 32 78 24



DO2012-1-022 22 32 32 78 24

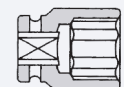
DO2012-1-024 24 35 36 78 24

DO2012-1-025 25 36 36 78 24

DO2012-1-027 27 39 38 78 54

DO2012-1-028 28 40 38 78 54

DO2012-1-030 30 42.5 38 78 54



## REPAIR & SERVICE DEPARTMENT

From the Yokota UK service centre at our Sheffield head office we are able to offer you full service, repair & preventative maintenance.

- FREE no obligation quotations
- 3 month comprehensive warranty on all work carried out
- Fully traceable repair history through our quality management systems
- Only OEM spare parts used
- Complete maintenance advice service